

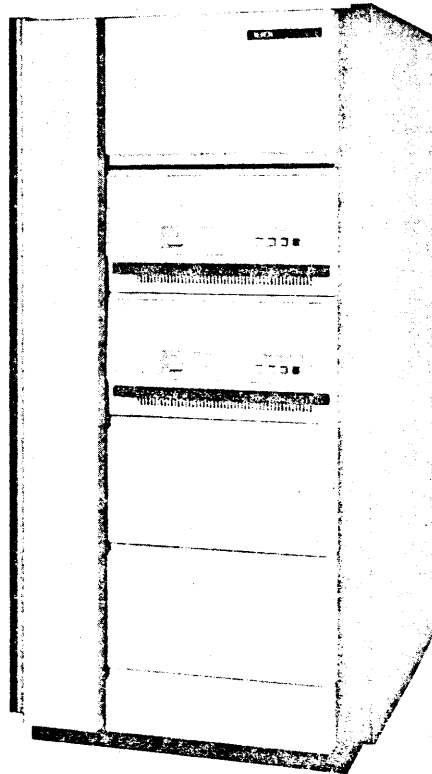
## Xerox Model 3211/3242/3243 Cartridge Disk System

The Xerox Model 3211/3242/3243 Cartridge Disk System provides the Xerox computer user with an economical, medium capacity, random access secondary storage capability having an average access time (seek and latency) of approximately 50.5 milliseconds.

A Cartridge Disk System consists of one Model 3211 Rotating Storage Controller and from one to eight Cartridge Disk Drives. The Model 3242 Cartridge Disk Drive has a total sectored storage capacity of 5.7 million bytes on one removable spindle. Data is recorded on both surfaces of the removable disk. The Model 3243 Car-

tridge Disk Drive has a total sectored storage capacity of 11.4 million bytes. Half of the total capacity is on a removable disk, and half is on a non-removable disk. Data is recorded on all four surfaces. Heads on the fixed and removable disks share the same head carriage.

Up to eight drives can be attached to a Model 3211 Controller for a total storage capacity of up to 85.5 million bytes per controller. Dual Access is optionally available, as is a Controller Expansion Option which is required if five or more disks per controller are to be supported.

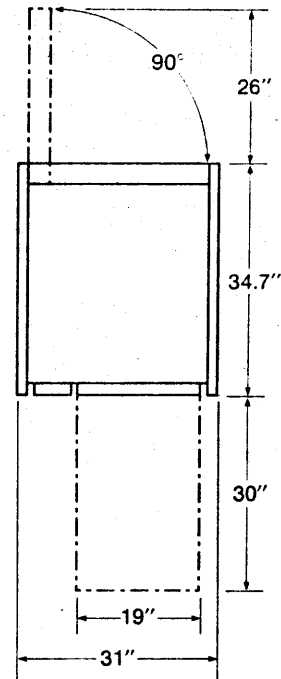


# Xerox Model 3211/3242/3243 Cartridge Disk System

The Model 3211 also serves as the controller for Xerox Model 3214 RAD Storage System. For added flexibility, Cartridge Disks and RADs may be intermixed in any combination to a maximum of eight units per controller. If the eighth unit is a Cartridge Disk, access is limited to the removable cartridge only. Up to four Cartridge Disk and/or RAD units may be mounted in a single cabinet.

## Specifications

Recording Format	1024 bytes/sector 7 sectors/track 400 tracks/surface (+ 8 alternates)
Drive Capacity (sectored)	
Model 3242	5.7 million bytes (removable)
Model 3243	11.4 million bytes (5.7 million bytes fixed and 5.7 million bytes removable)
Nominal Access Time	
Seek	38 msec. average (12-75 msec.)
Rotational Latency	12.5 msec. average (0-25 msec.)
Transfer Rates	
Instantaneous (per sector)	312K bytes/sec.
Average (multiple sectors)	286K bytes/sec.
Cable Lengths (3211 to drives)	
4 drives or less, single access	20 ft. maximum
5 drives or more, or dual access	100 ft. maximum
Physical Dimensions (approx.)	
Cartridge Disk Units	
Height	10.3 in.
Width	19 in.
Depth	28.5 in.
Weight	160 lbs.
Cabinet (up to four units)	
Height	63.4 in.
Width	31 in.
Depth	34.7 in.
Controller	
Space is provided within the host mainframe.	



FRONT

NOTE: All dimensions are approximate.